

प्रश्नपत्रिका क्र.

926471

कोड : २०२

परीक्षा दिनांक : १४/१२/२०१४

माध्यम : इंग्रजी

महाराष्ट्र राज्य शिक्षक पात्रता परीक्षा  
(MAHATET)

वेळ : दुपारी २.३० ते सायंकाळी ५.००

पेपर II. (इ. इवी ते इ. एवी)  
बैठक क्रमांक

--	--	--	--	--	--	--	--	--	--

एकूण गुण १५०

एकूण पृष्ठे ३२

## प्रश्नपत्रिका सोडविण्यापूर्वी कृपया खालील सूचना काळजीपूर्वक वाचा.

### सूचना :

- प्रश्नपत्रिकेमध्ये सलग एकूण १५० प्रश्न असून ते सोडविण्यासाठी उमेदवारास अडीच तास वेळ देण्यात आलेला आहे. प्रत्येक प्रश्नास एक गुण आहे. सर्व प्रश्न सोडविणे आवश्यक आहे.
- प्रत्येक प्रश्न वस्तुनिष्ठ स्वरूपाचा असून प्रश्नाच्या खाली उत्तराचे पर्याय दिलेले आहेत. उत्तर नोंदविताना चार पर्यायांपैकी बरोबर उत्तर असलेल्या पर्याय क्रमांकाच्या वर्तुळाला काळ्या/निळ्या शाईच्या बॉलपेनने पूर्णपणे रंगवून उत्तर देणे आवश्यक आहे. अर्धवट रंगवलेले वर्तुळ, खाडाखोड अथवा एकाच प्रश्नासाठी दोन उत्तरे दर्शविलेली असतील अशा उत्तरांना गुण दिले जाणार नाहीत. पेन्सिलीने नोंदविलेली उत्तरे तपासली जाणार नाहीत. प्रश्नपत्रिकेमध्ये खालीलप्रमाणे विषयनिहाय प्रश्न आहेत. माध्यम
  - भाग - A : भाषा १ व २ - प्रश्न-क्रमांक १ ते ६० - ६० गुण इंग्रजी, मराठी
  - भाग - B : बालमानसशास्त्र व अध्यापनशास्त्र - प्रश्न-क्रमांक ६१ ते ९० - ३० गुण इंग्रजी
  - भाग - C : गणित व विज्ञान किंवा सामाजिक शास्त्रे - प्रश्न-क्रमांक ९१ ते १५० - ६० गुण इंग्रजी
- एकदा दिलेले उत्तर बदलता येणार नाही.
- प्रश्नाला दिलेले पर्याय अचूक उत्तराच्या सदृश असतात. त्यामुळे सर्वात अचूक उत्तराच्या वर्तुळाला गिरवणे आवश्यक आहे, याची परीक्षार्थीने नोंद घ्यावी.
- प्रत्यक्ष परीक्षा झाल्यानंतर एक आठवड्याचे आत संभाव्य उत्तरसूची जाहिर करण्यात येईल. प्रश्नपत्रिकेमधील प्रश्नांबाबत प्राप्त आक्षेपांनुसार कोणत्याही कारणामुळे प्रश्न (प्रश्न व पर्यायी उत्तरे) चुकीचे आहेत असे आढळल्यास व परिषदेच्या तज्ञ समितीने ते मान्य केल्यास ते प्रश्न रद्द करून उर्वरित प्रश्नांच्या गुणांवर आधारित तज्ञ समितीने निश्चित केलेल्या निश्चित सूत्रानुसार अचूक प्रश्नांच्या गुणांनुसार पात्रता जाहिर करण्यात येईल.
- परीक्षार्थीने आपला बैठक क्रमांक त्यांना पुरविलेल्या प्रश्नपत्रिकेवर नोंदवावा.
- प्रश्नपत्रिकेत कोणत्याही प्रश्नांच्या उत्तराची नोंद करू नये. उत्तरपत्रिकेचा, प्रश्नपत्रिकेचा कोणताही भाग वेगळ करू नये.
- कच्चे काम करण्यासाठी प्रश्नपत्रिकेच्या शेवटच्या पानावर दिलेल्या कोऱ्या जागेचा वापर करावा.
- परीक्षार्थीने प्रश्नपत्रिकेचा व उत्तरपत्रिकेचा क्रमांक स्वाक्षरी पटावर लिहिणे आवश्यक आहे.
- परीक्षा प्रवेशपत्राची मागणी केल्यास पर्यवेक्षकास दाखवावे. प्रवेशपत्रात दुरुस्ती असल्यास ती करून / नसल्यास तसेच प्रवेशपत्र परीक्षेनंतर पर्यवेक्षकाकडे देऊन पोच घ्यावी व ही पोच पावती जपून ठेवावी.
- उत्तरपत्रिका देताना उत्तरपत्रिकेची Carbonless प्रत परीक्षार्थीने परीक्षा झाल्यानंतर परत घेऊन स्वाक्षरी पटावर दुसरी स्वाक्षरी करावी. दुसरी स्वाक्षरी नसल्यास त्याने उत्तरपत्रिका पर्यवेक्षकाकडे दिलेली नाही असे समजण्यात येईल.
- पर्यवेक्षकाच्या सूचनेशिवाय परीक्षागृह सोडू नये.
- परीक्षार्थीने परीक्षा चालू असताना अथवा परीक्षा संपल्यानंतर परीक्षेसंबंधी कोणतेही साहित्य परीक्षागृहाबाहेर नेल्यास / नेल्याचे निदर्शनास आल्यास त्याची या परीक्षेतील उमेदवारी रद्द होईल. त्याचबरोबर त्यांचेविरुद्ध भारतीय दंडसंहिता (IPC) अंतर्गत कारवाई करण्यात येईल.

15A25E

**PART - A : ENGLISH**

Read the following conversation between the persons indicated. Then complete blanks given in the reported speech each by choosing from the options given below : [Q. Nos. 1 and 2]

Pooja : Hello, can I speak to Garima ?

Snehal : I'm afraid, she's not at home. May I know who is speaking ?

Pooja : I'm Pooja. I think you are Snehal. Please tell your mother that I will meet her at 5 pm sharp at Coffee House.

Snehal : O.K. auntie. I'll tell her.

1. Pooja asked over telephone \_\_\_\_\_.  
(1) if I can speak to Garima.                      (2) if I may speak to Garima  
(3) if I could speak to Garima.                      (4) if she could speak to Garima.
2. Snehal replied that her mother was not at home and wanted to know \_\_\_\_\_.  
(1) who is speaking  
(2) if I know who was he/she  
(3) who was speaking  
(4) if she might know who is he/she
3. Choose the one which best expresses the meaning of the given word :  
'Nauseate'  
(1) Tempt                      (2) Sicken                      (3) Despise                      (4) Detest
4. Choose the word nearly 'Opposite' in meaning to the underlined word in the sentence :  
"Sudhir used to disparage his neighbour every now and then."  
(1) denigrate                      (2) belittle                      (3) praise                      (4) criticize
5. Choose the one which best expresses the meaning of the underlined idiom :  
"Piu had to look high and low before she could find her scooter key."  
(1) nowhere                      (2) always                      (3) everywhere                      (4) somewhere
6. Which one of the following pairs is not correctly matched as 'one-word substitution' for the given phrase ?  
(1) A person who betrays a friend – Traitor  
(2) A sea abounding in islands – Archipelago  
(3) Contempt of God – Blasphemy  
(4) A house for storing grains – Godown



In the given dialogue there are blanks, each of them has been numbered. The suitable expression has been mentioned against the number, choose the most suitable alternative to fill in the blank : [Q. Nos. 11 to 13]

- Student : Sir, I feel out of sorts now. 11 ?  
Teacher : What's the problem ?  
Student : Actually 12 and I think there may be food-poisoning. I feel like vomiting !  
Teacher : Don't worry 13 the peon to take you home.  
Student : Thank you sir.

11. (1) Please allow me (2) Can I go out  
(3) Will you please allow me (4) May I leave early
12. (1) I am feeling strange (2) there is serious problem  
(3) I have some stomach problem (4) Some trouble is in the stomach
13. (1) Where is the peon (2) I'm asking  
(3) You may go to (4) Someone call
14. Choose the most correct alternative :  
(A) My house's roof is leaking.  
(B) The roof of my house is leaking.  
(C) My house is out of repairs.  
(1) Only (A) is correct (2) Only (B) is correct  
(3) Both (A) and (B) are correct (4) Both (B) and (C) are correct
15. Pick out the most effective word to fill in the blanks to make the sentence meaningfully complete :  
"The unruly behaviour of the students \_\_\_\_\_ their teacher."  
(1) tempered (2) clashed (3) aggrieved (4) incensed
16. Choose the most appropriate alternative to fill in the blank :  
"The teacher ordered Kamal to leave the room and \_\_\_\_\_ him to return."  
(1) stopped (2) refused (3) forbade (4) challenged
17. Choose the correctly spelt word :  
(1) Sinchronize (2) Synchronize (3) Synchronize (4) Synchronize
18. Choose the most appropriate alternative :  
"He neglects attending \_\_\_\_\_ church, though \_\_\_\_\_ church is only few yards from his house."  
(1) no article, the (2) the, the (3) the, no article (4) a, the

19. Choose the appropriate alternative :

"A man of honour adheres \_\_\_\_\_ his convictions even if others jeer \_\_\_\_\_ him."

- (1) upon, by            (2) with, on            (3) at, at            (4) to, at

20. Choose the appropriate alternative to fill in the blank :

"Who \_\_\_\_\_ such a behaviour by ?"

- (1) you were taught            (2) you being taught  
(3) were you taught            (4) were you been taught

*In the following passage, there are blanks, each of them has been numbered. The appropriate alternative has been mentioned against the number. Choose the correct alternative to fill in the blanks : [Q. Nos. 21 and 22]*

Interviews are very important for all of us. We must face interviews with confidence. There is 21 any person who at one time or the other has not faced an interview situation. While interviews are a day to day experience for people who 22 with others in their daily chores.

21. (1) perhaps            (2) hardly            (3) probably            (4) possibly

22. (1) interact            (2) respond            (3) react            (4) concern

23. Pranesh is afraid of marriage. His family thinks that he is suffering from \_\_\_\_\_.

- (1) genophobia            (2) geraphobia            (3) gynaephobia            (4) gamophobia

24. Name the 'Figure of Speech' in the following line :

*"Failures are the pillars of success."*

- (1) Paradox            (2) Hyperbole            (3) Oxymoron            (4) Euphemism

25. Choose the one which best expresses the same sentence in 'Passive Voice' :

*"Jack offered me a seat."*

- (1) I was offered a seat by Jack.            (2) I am offered a seat by Jack.  
(3) I had been offered a seat by Jack.            (4) I was been offered a seat by Jack.

26. Choose the most correct alternative showing indirect narration for the given 'Direct Speech' :

*Mother said to me, "Don't run in the sun."*

- (A) Mother advised me not to run in the sun.  
(B) Mother forbade me to run in the sun.  
(C) Mother advised me do not run in the sun.

- (1) Only (A) is correct            (2) Only (B) is correct  
(3) Both (A) and (B) are correct            (4) Only (C) is correct

27. Fill in the blank by choosing the correct alternative :  
 “ \_\_\_\_\_ the resistance offered by him, the police arrested him.”  
 (1) Concerning (2) Viewing (3) Notwithstanding (4) Regarding
28. Choose the correct alternative to fill in the blank :  
 “The gold mined in India is \_\_\_\_\_ the gold mined in Africa.”  
 (1) superior than (2) more superior than  
 (3) more superior to (4) superior to
29. Choose the most suitable alternative to make the sentence meaningfully complete :  
 “If I knew his address \_\_\_\_\_.”  
 (1) I would have given it to you. (2) I would have give it to you.  
 (3) I would give it to you. (4) I will give it to you.
30. Choose which one of the following is correct :  
 (1) A summon has been served on him.  
 (2) A summons have been served on him.  
 (3) A summons has been served on him.  
 (4) Summons have been served on him.

**PART - A : MARATHI**

31. पुढील शब्दांमधून अनेकवचनी शब्द ओळखा :  
 (1) शब्द (2) निरोप (3) मार्ग (4) वाटा
32. पुढील जोड्यांमधून स्त्रीलिंग - पुल्लिंगाची चुकीची जोडी ओळखा :  
 (1) गाडी - गाडा (2) मादा - मादी (3) वृक्ष - लता (4) कोल्हा - कोल्ही
33. कोणत्या विभक्तीला प्रत्यय नसतात ?  
 (1) प्रथमा (2) द्वितीया (3) पंचमी (4) संबोधन
34. “तो साधू या देवळातच मुक्कामास असतो.” - या वाक्याचा काळ ओळखा :  
 (1) साधा वर्तमानकाळ (2) पूर्ण वर्तमानकाळ  
 (3) रीती भविष्यकाळ (4) रीती वर्तमानकाळ
35. तृतीय पुरुषी, एकवचनी, नपुंसकलिंगी असे स्वतंत्र क्रियापद असणारा प्रयोग कोणता ?  
 (1) सकर्मक कर्तरी (2) भावे (3) अकर्मक कर्तरी (4) कर्मणी
36. पुढील वाक्यांमधून विध्यर्थी वाक्य ओळखा :  
 (1) मनःपूर्वक दिलेल्या निमंत्रणाला मान द्यावा  
 (2) काल आला होतात ना तुम्ही  
 (3) ऊठ, लवकर तयार हो  
 (4) काय कमालीचे आढेवेढे घेतात लोक

37. "ही न्यूनता सुखाची, चित्ता सदा विदारी,  
स्वामी तिन्ही जगांचा, आईविना भिकारी"  
या काव्यपंक्तीतील रस ओळखा :
- (1) अद्भुत (2) शांत (3) करुण (4) शृंगार
38. "पिवळे तांबूस ऊन कोवळे पसरे चौफेर  
ओठा नेई सोने, वाटे, वाहुनिया दूर"  
या काव्यपंक्तीत कोणता अलंकार आढळतो ?
- (1) अतिशयोक्ती (2) उत्प्रेक्षा (3) रूपक (4) उपमा
39. 'आयजीच्या जिवावर बायजी उदार' या म्हणीच्याच अर्थाची म्हण ओळखा :
- (1) पै दक्षिणा लक्ष प्रदक्षिणा (2) उंदराला मांजर साक्षी  
(3) काखेत कळसा गावाला वळसा (4) हलवायाच्या घरावर तुळशीपत्र
40. 'हळद लागणे' या वाक्प्रचाराच्याच अर्थाचा वाक्प्रचार ओळखा :
- (1) दोनाचे चार हात होणे (2) बोभाटा होणे  
(3) मनात मांडे खाणे (4) हायसे वाटणे
41. पुढील शब्दांमधून मराठी उपसर्ग ओळखा :
- (1) गैर (2) प्र (3) पड (4) अप
42. पुढील शब्दांपैकी कोणता शब्द प्रत्ययघटित आहे ?
- (1) सरहद्द (2) संगीत (3) निगर्वी (4) तुलना
43. 'अंबर' शब्दाचा समानार्थी शब्द ओळखा :
- (1) रव (2) सिंधू (3) अनिल (4) हेम
44. 'आमंत्रित' या शब्दाचा विरुद्धार्थी शब्द ओळखा :
- (1) निमंत्रित (2) आगंतुक (3) सुमंत्रित (4) अनावृत
45. चुकीच्या प्रकाराने केलेले सामान्य रूप ओळखा :
- (1) दरवाजा - दरवाजा (2) माळ - माळे  
(3) भूल - भुली (4) मूल - मुली
46. 'द्गोचर' या संधीचा योग्य विग्रह ओळखा :
- (1) द् + गोचर (2) द्ग + गोचर (3) द्क् + गोचर (4) द्ग + ओचर
47. अव्ययीभाव समासाचे उदाहरण ओळखा :
- (1) गैरशिस्त (2) वदनचंद्र (3) नर्मदा (4) वाडेहुडे
48. पुढील शब्दांमधून दर्शक सर्वनाम ओळखा :
- (1) मी (2) तुम्ही (3) स्वतः (4) हा

49. पुढील शब्दांमधून विशेषण नसलेला शब्द ओळखा :
- (1) दुखरा (2) किरकिरी (3) आवाका (4) आजारी
50. पुढीलपैकी कोणता शब्द क्रियापद नाही ?
- (1) सालवाले (2) दुखावले (3) वळवला (4) बसवले
51. पुढील क्रियापदांमधून प्रयोजक क्रियापद ओळखा :
- (1) निजला (2) बोलावते (3) गेला (4) देववीन
52. पुढील शब्दांमधून लेखननियमांनुसार अचूक शब्द ओळखा :
- (1) ऋणानुबंध (2) रुणानुबंध (3) ऋणानुबंध (4) ऋणानुबंध
53. पुढील कादंबऱ्यांमधून रंगनाथ पठारे यांच्या कादंबरीचे नाव ओळखा :
- (1) झुंजारमाची (2) पानिपत (3) तुंबाडचे खोत (4) ताम्रपट
54. 'आहे मनोहर तरी' हे कोणत्या प्रकारचे पुस्तक आहे ?
- (1) कवितासंग्रह (2) आत्मकथन (3) प्रवासवर्णन (4) कादंबरी
55. गटात न बसणारे नाव ओळखा :
- (1) चिनी माती (2) इजिप्तायन (3) अमेरिका (4) ग्रीकांजली
56. 'रक्तपुष्प' ही प्रसिद्ध एकांकिका कोणी लिहिली आहे ?
- (1) महेश एलकुंचवार (2) विजय तेंडुलकर  
(3) दिलीप परदेशी (4) रत्नाकर
57. उत्तम कांबळे यांनी कोठे झालेल्या साहित्यसंमेलनाचे अध्यक्षपद भूषविले ?
- (1) पुणे (2) ठाणे (3) चिपळूण (4) चंद्रपूर

पुढील उतारा वाचून त्यापुढील प्रश्नांची उत्तरे लिहा : (प्रश्न-क्रमांक 58 ते 60)

आईवडिलांचे मुलांवर प्रेम असते. त्यांना त्यांची खूप काळजी वाटते. त्यांना मुलांचा अपेक्षाभंग झालेला, त्यांना दुःख झालेले, त्यांनी निराश झालेले पाहवत नाही. त्यांच्या बाबतीतले सर्व निर्णय आपणच अधिक योग्य रीत्या घेऊ शकतो, असे वाटल्यामुळेच ते मुलांबाबत विशिष्ट प्रकारे वागतात. मुलांनी कोणते शिक्षण घ्यावे, कोणाशी लग्न करावे, किती मुले होऊ द्यावीत याबाबतही त्यांचे आग्रही सल्ले असतात. परंतु यामुळे निर्णय घ्यायला, त्या निर्णयाला जबाबदार राहायला मुले शिकत नाहीत. त्यांना स्वातंत्र्य पेलता येत नाही. पाश्चात्य आईबाप मुलांशी या प्रकारे वागत नाहीत. 'हाताची घडी, तोंडावर बोट' हा आपल्या संस्कारांचा पाया, तर 'जा, पहा, करा, आपल्या निर्णयाची जबाबदारी घ्या -' हा त्यांच्या संस्कारांचा मूलमंत्र. पौर्वात्य संस्कार सगळे चुकीचे आणि पाश्चिमात्य संस्कार सगळे चांगले, असे मला मुळीच म्हणायचे नाही. परंतु जबाबदारी घ्यायला शिकण्याचे, स्वतंत्र पेलायला शिकण्याचे संस्कार मात्र आपण जरूर त्यांच्याकडून घ्यायला हवेत. मुलांना स्वतःच्या भावना ओळखायला, त्यांना नावे द्यायला आणि त्या व्यक्त करायला प्रोत्साहन दिले पाहिजे. मुख्य म्हणजे त्यांना चुका करण्याचे स्वातंत्र्य दिले पाहिजे आणि अयशस्वी होण्याची मुभाही !

58. भारतीय आईबाप मुलांना कसे बनवतात ?

- (1) स्वतंत्र (2) परावलंबी (3) हट्टी (4) स्वैर

59. आईबापांनी कोणते वैशिष्ट्य आत्मसात करायला हवे, असे लेखिका शेवटी सांगते ?  
(1) दुराग्रह (2) दुर्लक्ष (3) औदार्य (4) अनाग्रहीपणा
60. लेखिकेचा विचार कसा आहे ?  
(1) चुकीचा (2) पूर्वग्रहदूषित (3) पाश्चात्यधार्जिणा (4) समतोल

**PART - B : CHILD PSYCHOLOGY AND PEDAGOGY**

61. Which of the following is not included in motor development according to Gulteridge ?  
(1) Individual differences are seen in motor development.  
(2) The development of motor skills in infancy and childhood period occurs in a specific sequence.  
(3) There is a lot of difference in the motor development of boys and girls till adolescence is acquired.  
(4) The motor development of primary school children mainly depends on the maturity in physical development and practice.
62. Which of the following is not applicable to physical development ?  
(1) Development is a measurable aspect.  
(2) Development has a definite pattern.  
(3) The rate of development of every individual is different.  
(4) Changes in development can be improved.
63. When Sadhana learns to classify the stimuli and thinks with a view of attempting a conversation, then according to Jean Piaget this stage is called \_\_\_\_\_.  
(1) The stage of concrete operations  
(2) Preverbal Stage  
(3) The stage of cognitive development  
(4) The stage of pre-operational representation
64. Which of the following statements shows difference between Kindergarten Method and Montessori Method ?  
(1) Kindergarten Method gives more emphasis on education of sense organs.  
(2) Montessori Method gives importance to education of children between 2½ to 6 years of age.  
(3) Kindergarten Method gives emphasis on educational aids.  
(4) Montessori Method emphasizes personal education and activity.

65. Which of the following statements is not true about Heuristic Method ?
- (1) This method is supplementary to verify principles of teaching in child psychology.
  - (2) This method is useful to find out the cause and effect relationship.
  - (3) The number of students in this method should be limited.
  - (4) This method is suitable for all topics.
66. Which of the following is not a factor related to intelligence ?
- (1) Capacity of adjusting to new situations.
  - (2) Skill of making changes according to new situations.
  - (3) Incompetency of learning new things.
  - (4) Competency of proper use of previous experiences.
67. According of Guilford's Intelligence Theory, the 120 factors of intelligence are classified into which of the following three groups ?
- (1) Cognition, Memory, Evaluation
  - (2) Operations, Content, Products
  - (3) Thinking, Content, Cognition
  - (4) Memory, Products, Cognition
68. Which of the following is not applicable for image formation in one's mind ?
- (1) Previous experience is needed.
  - (2) Instead of getting an intense experience of an image, most of the people get experience of mixed images.
  - (3) The intensity of an image depends on the frequency of its experience.
  - (4) All types of images that are developed in the mind are of the same intensity.
69. The imagination of a Scientist or an Architect which does not leave the base of fundamental principles and situations is called \_\_\_\_\_.
- (1) Pragmatic Imagination
  - (2) Aesthetic Imagination
  - (3) Reproductive Imagination
  - (4) Fantastic Imagination
70. Which of the following should be avoided by a teacher during development of thinking powers and logical powers of a student ?
- (1) Teacher should not impose his opinions on students.
  - (2) Students should be given freedom of expressing their opinions.
  - (3) Teach them to think critically about all opinions.
  - (4) Thinking should be based on emotions and prejudices.
71. If the hormonal secretion of the thyroid glands decreases, then \_\_\_\_\_.
- (1) height increases
  - (2) mental development is stunted
  - (3) weight decreases
  - (4) good physical growth is seen



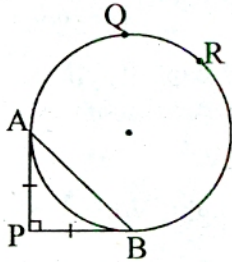
77. Which of the following is the group of basic factors of models of teaching ?
- (1) Focus, Syntax, Social System, Support System
  - (2) Syntax, Method, Focus, Social System
  - (3) Focus, Syntax, Method, Support System
  - (4) Focus, Syntax, Method, Modern Teaching
78. Which of the following is not a characteristic of children with special needs ?
- (1) The educational programmes of these children are different from those of general children.
  - (2) The needs of these children are different from the needs of the general children.
  - (3) The behaviour of these children is normal.
  - (4) The physical characteristics of these children are different from those of the general children.
79. Ramesh knows how to play a harmonium so he learnt violin quickly. Reena knows how to play badminton so she learnt tennis quickly. Which of the following theories of transfer of learning is indicated by these examples ?
- (1) Theory of Ideals
  - (2) Gestalt Theory of Transfer
  - (3) Theory of Identical Components
  - (4) Theory of Generalisation
80. Which of the following pairs of learning defect and its description is not correct ?
- | <b>Group 'A'</b> | – | <b>Group 'B'</b>    |
|------------------|---|---------------------|
| (A) Dyslexia     | – | Writing Defect      |
| (B) Dysgraphia   | – | Reading Defect      |
| (C) Dyscalculia  | – | Mathematical Defect |
- (1) (A) and (B)    (2) (B) and (C)    (3) (A) and (C)    (4) (A), (B) and (C)
81. Which of the following statements about Flander's Interaction Analysis System is not correct ?
- (1) This system helps in observation of the teacher's verbal behaviour.
  - (2) In this system 1st to 7th groups are related to teachers behaviour.
  - (3) In this system 8th to 9th groups are related to student behaviour.
  - (4) In this system the 10th group is related to the headmaster's behaviour.
82. Which of the following things should be avoided in case of moron students because they have low power of understanding ?
- (1) Do not separate them from other students while teaching.
  - (2) Proper recitation (revision) of the points which are taught should be taken.
  - (3) Classwork and homework should be according to their capacity.
  - (4) Prepare confidence in them and encourage them to develop good hobbies.

83. Herbart's Theory of Teaching which indicates that a teacher can create an impression of his personality on the learner is included in the group of \_\_\_\_\_.
- (1) Normative Theories of Learning      (2) Descriptive Theories of Learning  
 (3) Formal Theories of Learning      (4) Mutual Inquiry Theories of Learning
84. Which of the following aspect is not seen in language development of children with learning disabilities ?
- (1) These children fall behind in language development as compared to other children.  
 (2) They can repeat words and sentences as it is which they hear.  
 (3) They cannot describe events or situations which occur.  
 (4) These children lag behind in understanding the sentence patterns in language.
85. Which of the following is an affiliative need ?
- (1) Satisfaction of various organs      (2) Power (Authority)  
 (3) Social Acceptance      (4) Stability
86. Which of the following is an external factor which controls attention ?
- (1) Immediate (Urgent) Needs      (2) Repetition (Recurrence) of Stimulus  
 (3) Habit      (4) Attitude
87. Which of the following is not a characteristic of Motivation ?
- (1) Motivation has the power of directing human behaviour.  
 (2) Motivation remains activated till behaviour is completed.  
 (3) Specific things are selected because of Motivation.  
 (4) Motivation helps in achieving physical and mental imbalance.
88. Which of the following things are necessary for creation of sensation ?
- (A) Stimulant  
 (B) Sense Organ  
 (C) Nervous System
- (1) (A) and (B)      (2) (B) and (C)      (3) (A) and (C)      (4) (A), (B) and (C)
89. In order to keep in mind the seven colours of the rainbow, the word 'VIBGYOR' is prepared by using the first alphabet of all colours of the rainbow. On which method of learning or registration is this example based on ?
- (1) Spaced Method      (2) Memonic Devices Method  
 (3) Whole Method      (4) Recitation Method
90. Which of the following is an incorrect aspect of hallucination, a defect of perception ?
- (1) Hallucinations are formed in absence of stimulant.  
 (2) Hallucinations occur due to specific types of mental restlessness.  
 (3) In hallucination sensations are misunderstood.  
 (4) High insensitivity of mind is the reason of hallucination.

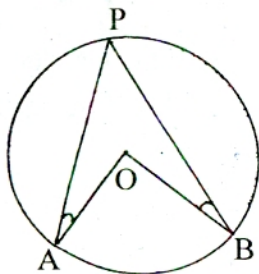
**PART - C : MATHEMATICS AND SCIENCE**

91. How many square tiles with the maximum length of side can be paved on the floor of hall having size  $201 \text{ ft} \times 87 \text{ ft}$  ?  
(1) 17487                      (2) 7772                      (3) 1943                      (4) 5829
92. 'Ratrani' superfast bus starts from Mumbai with full of its capacity. It stops at station A where  $\frac{1}{3}$  of the passengers alight and 30 board the bus. At station B,  $\frac{1}{4}$  of passengers alight and 12 board the bus. At stop C all 72 passengers alight. What is the maximum capacity of the bus ?  
(1) 75                      (2) 60                      (3) 65                      (4) 120
93. An electric supply company raises energy charges by 20% and a year later by 15%. If the total increase has been made all at once, by what percent should company raise charges ?  
(1) 35%                      (2) 5%                      (3) 38%                      (4) 17.5%
94. If  $m = 0.1039$ , then find the value of  $3m + \sqrt{1 + 4m^2} - 4m$  :  
(1) 0.1039                      (2) 1.1039                      (3) 2.1039                      (4) 3.1039
95. Find the cube root of  $3 \frac{268}{2197}$  :  
(1)  $\sqrt{3} \frac{4}{13}$                       (2)  $\sqrt{3} \frac{7}{13}$                       (3)  $1 \frac{6}{13}$                       (4)  $6 \frac{1}{13}$
96. If  $3^{x-2} + 3^{x+2} = 19926$ , then find  $x$  :  
(1) 9                      (2) 7                      (3) 11                      (4) 5
97. If the sides of a right angled triangle are  $x$ ,  $x + 1$  and  $x - 1$ , then its hypotenuse is :  
(1) 5                      (2) 4                      (3)  $x^2$                       (4)  $4x^2$
98. Avinash wishes to make a 100 sqm rectangular garden at a side of house. Since he has only 30 m net for fencing, he fences only 3 sides letting the house wall be the fourth side. Find breadth of the garden :  
(1) 15 m                      (2) 5 m                      (3) 10 m                      (4) 3 m
99. PQ and RS are two parallel chords of a circle, which are on opposite sides of the centre such that  $PQ = 6 \text{ cm}$ ,  $RS = 8 \text{ cm}$  and distance between two parallel chords is 7 cm. Find the radius of circle :  
(1) 3.5 cm                      (2) 7 cm                      (3) 5 cm                      (4) 4 cm
100. A sold a bag to B at 30% profit and B sold it to C at the loss of 20%. C bought the bag for Rs. 832. What is the cost price of bag purchased by A ?  
(1) Rs. 832                      (2) Rs. 850                      (3) Rs. 760                      (4) Rs. 800

101. In the given figure, seg. AB is chord of a circle having radius 14 cm. In  $\triangle APB$ ,  $\angle APB = 90^\circ$ ,  $PA = PB$  and  $AB = 6\sqrt{2}$  cm. What is the length of the path around the edge PAQRBP ?



- (1) 88 cm                      (2) 78 cm                      (3) 144 cm                      (4) 132 cm
102. In an examination average marks scored by 80 students were 50. Average score of passed students were 58 and that of the failed students were 18. How many students got failed in the examination ?
- (1) 40                      (2) 64                      (3) 16                      (4) 18
103. A person spends  $\frac{2}{5}$  of his monthly salary on food,  $\frac{3}{10}$  on house rent and Rs. 2,000 on other. He saves  $\frac{7}{40}$  of his monthly salary. What is his total expenditure on food and house rent ?
- (1) Rs. 6,400                      (2) Rs. 11,200                      (3) Rs. 16,000                      (4) Rs. 4,800
104. If  $x = 5.\overline{37} + 2.\overline{17} + 17.\overline{89} - 8.\overline{32}$ , what is the value of x ?
- (1)  $17.\overline{15}$                       (2)  $17.\overline{14}$                       (3)  $17.\overline{12}$                       (4)  $17.\overline{13}$
105. If  $8y^3 + ky^2 - 2y + 17$  is divided by  $2y - 3$ , the remainder is 68. What is the value of k ?
- (1) 12                      (2) 10                      (3) 36                      (4) 18
106. In figure, 'O' is the centre of circle,  $m\angle PAO = 32^\circ$ ,  $m\angle PBO = 47^\circ$ , find  $\angle AOB$  :

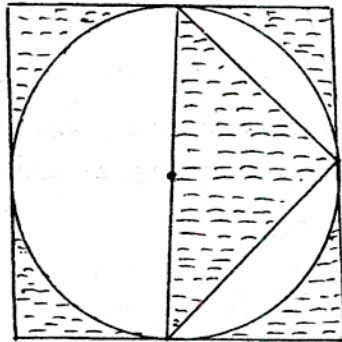


- (1)  $79^\circ$                       (2)  $158^\circ$                       (3)  $168^\circ$                       (4)  $84^\circ$

107. A solid metallic sphere of diameter 28 cm is melted and recasted into a number of smaller cones each of diameter  $4\frac{2}{3}$  cm and height 3 cm. Find number of cones so formed :

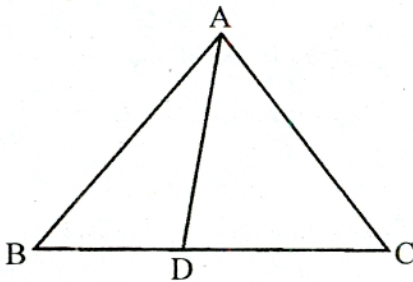
- (1) 672                      (2) 696                      (3) 525                      (4) 796

108. A circle of diameter 14 cm is inscribed in a square, as shown in figure. Find area in  $\text{cm}^2$  of shaded region :



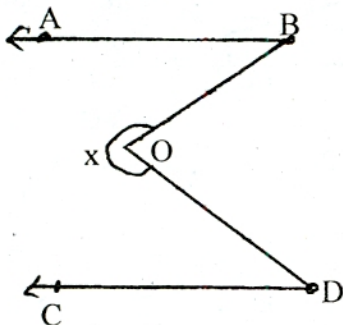
- (1) 91                      (2) 49                      (3)  $91\pi$                       (4)  $49\pi$

109. In figure,  $m\angle ABD = 30^\circ$ ,  $m\angle ADC = 70^\circ$ ,  $m\angle ACD = 25^\circ$ . The descending order of the length of sides AB, AD and AC is \_\_\_\_\_ of the following.



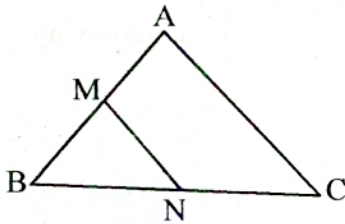
- (1)  $AC > AB > AD$                       (2)  $AB > AD > AC$   
 (3)  $AD > AC > AB$                       (4)  $AC > AD > AB$

110. In figure,  $AB \parallel CD$ .  $m\angle ABO = 40^\circ$ ,  $m\angle ODC = 35^\circ$ , find  $x$  :



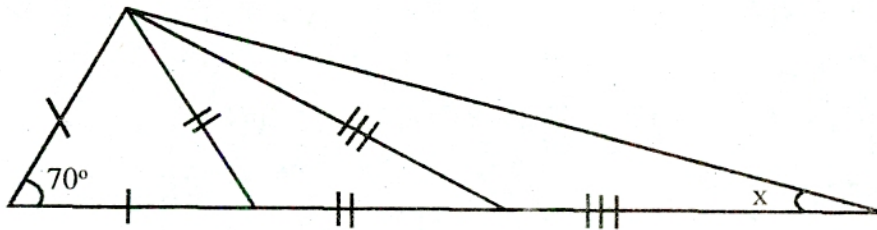
- (1)  $285^\circ$                       (2)  $205^\circ$                       (3)  $210^\circ$                       (4)  $275^\circ$

111. A rhombus OABC is drawn inside a circle whose centre 'O' is its vertex and other vertices A, B and C are on the circle. If area of the rhombus is  $32\sqrt{3}$  m<sup>2</sup>, then find the radius of circle :
- (1) 64 m                      (2) 8 m                      (3) 4 m                      (4) 16 m
112. The difference between compound interest and simple interest on certain amount @ Rs. 8 p.c. p.a. for 24 months is Rs. 180. What is that amount ?
- (1) Rs. 28,125              (2) Rs. 24,125              (3) Rs. 30,125              (4) Rs. 27,125
113. The ratio of milk and water in the mixture of 72 litres is 7 : 2. What amount of milk should be added into it so that the ratio of water and milk will be 2 : 11 ?
- (1) 16 lit.                      (2) 40 lit.                      (3) 20 lit.                      (4) 32 lit.
114. The sum of the first n natural two digit numbers divisible by 6 is 1380. What is the value of n ?
- (1) 18                      (2) 23                      (3) 20                      (4) 24
115. The sum of length, breadth, height of a room is 19 m. The length of the diagonal is 11, m. Find cost of painting the total inner surface area of the room at the rate of Rs. 15 per m<sup>2</sup> :
- (1) Rs. 1,800              (2) Rs. 3,600              (3) Rs. 1,815              (4) Rs. 3,615
116. In figure, seg. MN  $\parallel$  side AC of  $\Delta ABC$  and it divides the triangle into two parts of equal areas. Find the ratio  $\frac{AM}{AB}$  :



- (1)  $\frac{2}{1}$                       (2)  $\frac{1}{\sqrt{2}}$                       (3)  $\frac{2-\sqrt{2}}{2}$                       (4)  $\frac{\sqrt{2}}{1-\sqrt{2}}$

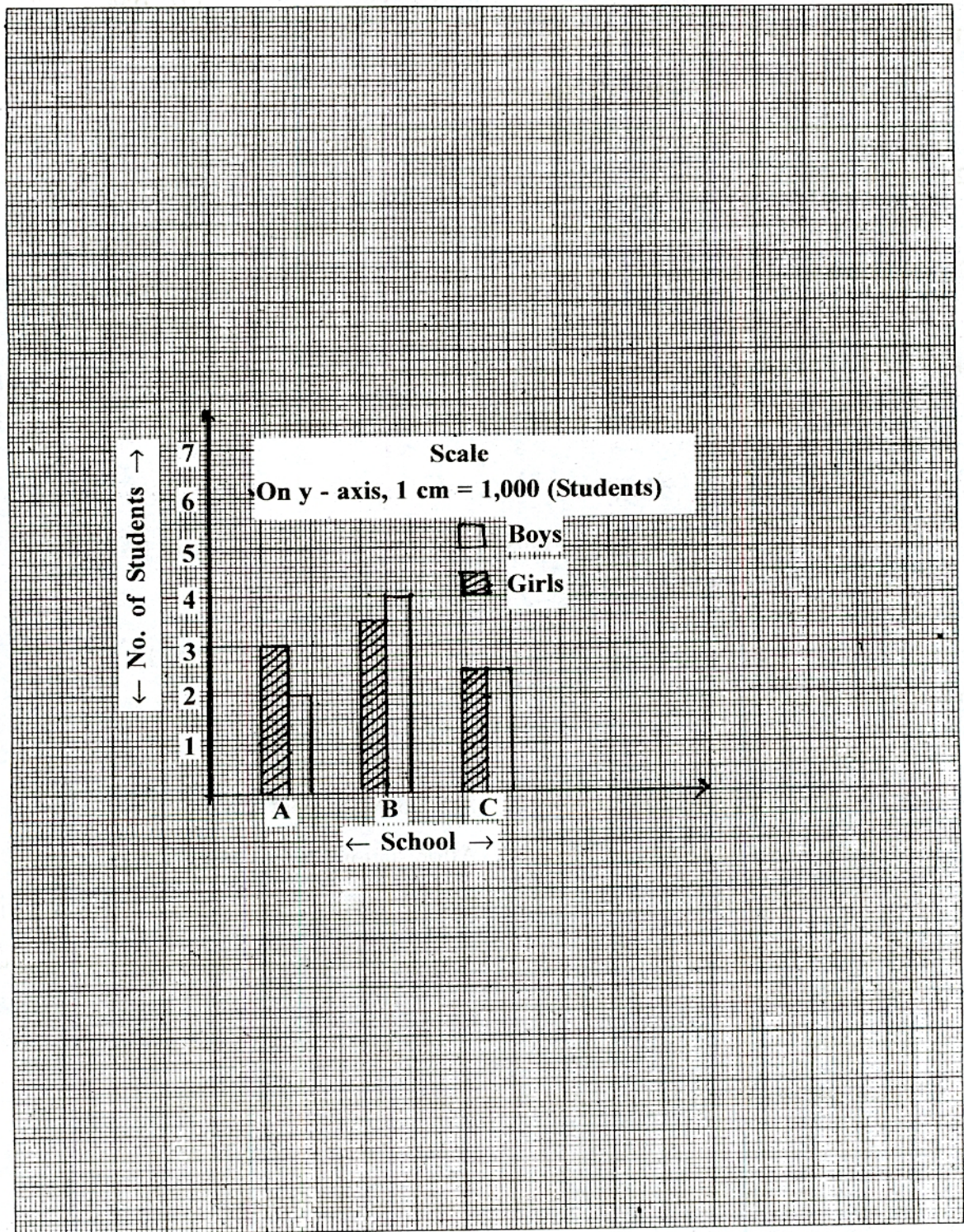
117.



From the information given in figure, find x :

- (1) 35°                      (2) 27.5°                      (3) 13.75°                      (4) 55°
118. A two digit number is 13 more than 5 times the sum of the digits. If 18 is added to the number obtained by interchanging the digits, we get the original number. What is the sum of the digits of the number ?
- (1) 7                      (2) 9                      (3) 8                      (4) 6

Number of girls and boys (in thousand) of three schools are as shown in the bar diagram. By observing bar diagram answer the following questions 119 and 120 :

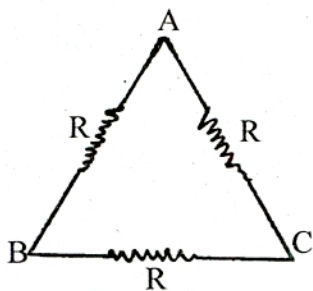


119. What is the average number of girls in all three schools ?

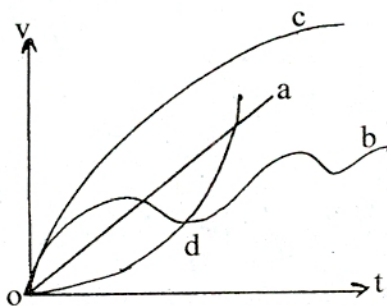
- (1) 3500                      (2) 3000                      (3) 2500                      (4) 3700

120. What is the difference between number of girls and boys from the schools A and B ?  
 (1) 500                      (2) 300                      (3) 800                      (4) 1000
121. The speed of an object can be \_\_\_\_\_.  
 (1) positive or zero but not negative.    (2) negative or zero but not positive.  
 (3) positive or negative but not zero    (4) always positive
122. Milk shows the properties of \_\_\_\_\_.  
 (1) a gel                      (2) an emulsion    (3) a solution                      (4) an aerosol
123. Which step of photosynthesis is responsible for evolution of molecular oxygen ?  
 (1) Dark Reaction    (2) Calvin Cycle    (3) Hill Reaction    (4) Krebs Cycle
124. Three resistances of 'R' ohm each are connected in parallel and then in series, ratio of equivalent resistance in parallel to equivalent resistance in series is \_\_\_\_\_.  
 (1)  $\frac{1}{3}$                       (2)  $\frac{1}{6}$                       (3)  $\frac{1}{9}$                       (4) 9
125. What will be the number of neutrons in the atom of following elements respectively ?  
 ${}_{11}^{23}\text{Na}$  ,  ${}_{12}^{24}\text{Mg}$  ,  ${}_{19}^{40}\text{K}$   
 (1) 11, 12, 19    (2) 23, 24, 40    (3) 34, 36, 59    (4) 12, 12, 21
126. Choose the incorrect match :  
 (1) Exhaustable Resource                      – Coal  
 (2) Women of Tihri Village                      – Appiko Movement  
 (3) Extensive Plantation of Trees – Afforestation  
 (4) Red Data Book                      – Record of Species Threatened from Extinction
127. Along a powerline current flow is from west to east. Neglecting earth's field, the magnetic field below the wire is towards \_\_\_\_\_.  
 (1) north                      (2) south                      (3) east                      (4) west
128. Which one of the following alkanes is liquid at room temperature ?  
 (1)  $\text{C}_3\text{H}_8$                       (2)  $\text{C}_{12}\text{H}_{26}$                       (3)  $\text{C}_{20}\text{H}_{42}$                       (4)  $\text{C}_{48}\text{H}_{98}$
129. \_\_\_\_\_ are the major source of methane in the atmosphere.  
 (1) Rice Fields                      (2) Sugarcane Fields  
 (3) Wheat Fields                      (4) Tea Plantations

130. Three resistances of R ohm each are connected as shown in the figure. Effective resistance between A and B is \_\_\_\_\_.

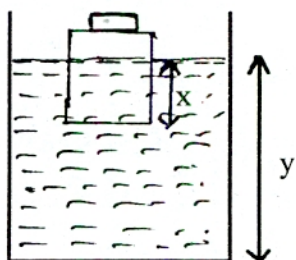


- (1)  $\frac{2R}{3}$                       (2)  $\frac{3R}{2}$                       (3) R                      (4)  $\frac{3R}{4}$
131. Which one of the following processes will help in increasing the speed of reaction ?
- (1) Reducing the Temperature                      (2) Using Powder Form of Solid Reactants
- (3) Adding Ice in Reaction                      (4) Reducing Concentration of Reactants
132. In an ecosystem, about 10% of energy available for transfer from one trophic level to the next is in the form of \_\_\_\_\_.
- (1) Mechanical Energy                      (2) Light Energy
- (3) Heat Energy                      (4) Chemical Energy
133. Velocity Time Graph of four objects are as shown in figure. Which object is moving with decreasing acceleration ?



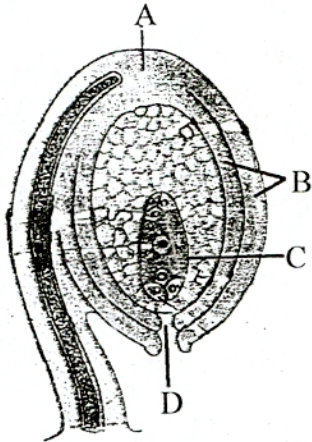
- (1) b                      (2) c                      (3) d                      (4) a
134. If atomic number of sodium is 11 and atomic mass no. is 23, then how many sodium atoms are present in 1 gram of sodium ?
- (1)  $6.022 \times 10^{23}$     (2)  $1.204 \times 10^{24}$     (3)  $5.474 \times 10^{22}$     (4)  $2.618 \times 10^{22}$
135. What is the shape of guard cells in the stomata of dicotyledonous plant ?
- (1) Dumbell                      (2) Pyramid                      (3) Kidney                      (4) Conical

136. A wooden block and a coin over it are floating on water as shown in the figure. If coin falls in water, \_\_\_\_\_.



- (1) x increases, y decreases                      (2) x decreases, y increases  
(3) x and y both decrease                      (4) x and y both increase
137. What will be the mass of pure gold in 30 grams of 18 carat gold ?  
(1) 22.5 grams      (2) 28.5 grams      (3) 26.0 grams      (4) 27.0 grams
138. Which part in the embryo elongates faster in the epigeal type of germination ?  
(1) Cotyledons      (2) Endosperm      (3) Epicotyl      (4) Hypocotyl
139. An object is at a distance of 1 metre in front of a plane mirror. Distance between object and image will be \_\_\_\_\_.  
(1) 1 metre      (2) 2 metre      (3) 1.5 metre      (4) 0.5 metre
140.  $K_2CO_3$  is a salt of \_\_\_\_\_.  
(1) weak acid and weak base                      (2) strong acid and strong base  
(3) strong acid and weak base                      (4) weak acid and strong base
141. In which part of the nephron does ultrafiltration take place ?  
(1) Malpighian Body                      (2) Proximal Convoluted Tubule  
(3) Loop of Henle                      (4) Distal Convoluted Tubule
142. The speed of a wave in a certain medium is 960 m/s. If 3600 waves pass over a certain point of the medium in 1 minute, the wavelength is \_\_\_\_\_.  
(1) 2 metre      (2) 4 metre      (3) 8 metre      (4) 16 metre
143. In a germinated pollen grain which cell forms male gameter ?  
(1) Tube Cell      (2) Vegetative Cell      (3) Germ Pore      (4) Generative Cell
144. Which one of the followings is the percentagewise third largest component of dry air near sea level ?  
(1) Oxygen                      (2) Carbondioxide  
(3) Argon                      (4) Neon

145. Weight of an object on earth's surface is 100 N. At height 'R' from earth surface, weight of the object will be \_\_\_\_\_. (R = Radius of Earth)
- (1) 25 N                      (2) 50 N                      (3) 12.5 N                      (4) 62.5 N
146. Transition elements and their oxides are used in industrial processes as \_\_\_\_\_.
- (1) detergents              (2) medicines              (3) catalysts              (4) insecticides
147. The figure given below shows certain parts indicated by alphabets. Choose the right answer in which the alphabets are correctly matched with the parts ?



- (1) A - Integuments, B - Embryosae, C - Micropyle, D - Chalaza  
 (2) A - Chalaza, B - Integuments, C - Embryosae, D - Micropyle  
 (3) A - Micropyle, B - Integuments, C - Embryosae, D - Chalaza  
 (4) A - Chalaza, B - Micropyle, C - Embryosae, D - Integuments
148. A body of mass 1 kg thrown upwards reaches a maximum height of 10 metres. The work done by the force of gravity during this vertical displacement is \_\_\_\_\_.
- (1) 98 J                      (2) 49 J                      (3) - 49 J                      (4) - 98 J
149. What is the use of heavy water in atomic reactor ?
- (1) To start nuclear fission                      (2) As a moderator for neutrons  
 (3) To reduce radioactive pollution                      (4) To stop nuclear fission
150. Which one of the followings is a fungal disease causing maximum deaths of poultry birds ?
- (1) Caryza                      (2) Pullorum                      (3) Rickets                      (4) Aspergillosis

OR

(Q. Nos. : 91 To 150)

**PART - C : SOCIAL STUDIES**

91. Whom did Adilshah confer the title 'Sirlashkar' ?

- (1) Malik Amber (2) Fatehkhan (3) Sharifji (4) Shahaji Raje

92. Find the incorrect pair :

- (1) Murumbdeo – Rajgad (2) Rairi – Raigad  
(3) Bhorpya – Pratapgad (4) Raireshwar – Rohida

93. Match correct pairs from group 'A' and 'B' :

**Group 'A'**

**Group 'B'**

- (A) Erasmus – (i) Scholar  
(B) Ferdinand Magellan – (ii) Sailor  
(C) Roger Bacon – (iii) Astronomer  
(D) Halley – (iv) Religious Reformer

- (1) (A) – (iv), (B) – (ii), (C) – (i), (D) – (iii)  
(2) (A) – (iv), (B) – (iii), (C) – (ii), (D) – (i)  
(3) (A) – (iii), (B) – (iv), (C) – (i), (D) – (ii)  
(4) (A) – (ii), (B) – (iii), (C) – (iv), (D) – (i)

94. Who was not arrested by the British Government during Meerut Conspiracy Case ?

- (1) S. A. Dange (2) Nimbkar  
(3) Muzaffar Ahmed (4) Rajendra Lahiri

95. Earthen bricks bearing some writing in \_\_\_\_\_ script have been found in Harappan Civilization sites.

- (1) Asirian (2) Babilonian (3) Mesopotamian (4) Sumerian

96. Match correct pairs from Group 'A' and 'B' :

**Group 'A'**

**Group 'B'**

- (A) Rajjuk – (i) Officer at Taluka Level  
(B) GOP – (ii) Head of the Village  
(C) Gramani – (iii) Officer at District Level
- (1) (A) – (iii), (B) – (i) (C) – (ii)  
(2) (A) – (iii), (B) – (ii) (C) – (i)  
(3) (A) – (ii), (B) – (i) (C) – (iii)  
(4) (A) – (ii), (B) – (iii) (C) – (i)

97. A new order 'Din-i-Ilahi' founded by Akbar was based on :

- (1) Principles of humanism, monotheism and universal brotherhood  
(2) Islamic Religion  
(3) Hindu Religion  
(4) Christian Religion

98. The title of 'Nayab Vakil-i-Mutlak' was conferred on \_\_\_\_\_.

- (1) Malharrao Holkar (2) Mahadaji Shinde  
(3) Raghuji Bhosale (4) Khanderao Dabhade

99. Out of the following, find the incorrect pair :

- (1) Robert Clive – Dual Government  
(2) Lord Cornwallis – Organised the Civil Service System  
(3) Lord Macaulay – Doctrine of Lapse  
(4) Lord Bentinck – Prohibition of Sati Act

100. Asiatic Society was established at \_\_\_\_\_.

- (1) Kolkata (2) Mumbai (3) Chennai (4) Nagpur

101. Find the odd term in the following :

- (1) Kalama (2) Hadis (3) Namaz (4) Roja

102. Out of these, which one is the invention of Holdmont ?
- (1) Blood is circulated in body through blood vessels.
  - (2) Chemistry and Pharmacy are related with each other.
  - (3) Invention of carbondioxide gas.
  - (4) Nature works on principle of universal gravitational force.
103. Petrarch, Bocassio, Maciavelli are authors of \_\_\_\_\_.
- (1) England
  - (2) France
  - (3) Italy
  - (4) Germany
104. Arrange these events in proper chronological order :
- (A) Kanagava Treaty
  - (B) Comodore Perry arrived at Edo.
  - (C) Japan brought Korea and Farmosa under its Empire.
  - (D) Meiji Revolution
- (1) (B), (A), (D), (C)
  - (2) (A), (B), (C), (D)
  - (3) (B), (D), (C), (A)
  - (4) (A), (C), (D), (B)
105. Find incorrect pair out of these :
- (1) Quam Nakruma – Ghana
  - (2) Jomo Kenyata – Kenya
  - (3) Robert Mugabe – Zimbabwe
  - (4) Stanley – England
106. For promotion of trade, European traders in China established an organisation named \_\_\_\_\_.
- (1) Peking
  - (2) Cohong
  - (3) Nanking
  - (4) Manchu
107. Arrange these events in 'Sanyukta Maharashtra' Movement in proper chronological order :
- (A) Akola Pact
  - (B) Fazal Ali Commission
  - (C) Dar Commission
  - (D) Nagpur Pact
- (1) (C), (A), (D), (B)
  - (2) (A), (B), (C), (D)
  - (3) (C), (D), (A), (B)
  - (4) (B), (D), (C), (A)

108. Sayajirao Gaikwad was the ruler of \_\_\_\_\_.
- (1) Satara (2) Sangli (3) Kolhapur (4) Baroda
109. P.T.I., U.N.I., Samachar Bharti and Hindustan Samachar are :
- (1) News Agencies (2) News Papers (3) News Channels (4) Radio Stations
110. Stone carving graphics are enormously collected at \_\_\_\_\_ in India.
- (1) Mysore (2) Nasik (3) Mumbai (4) Delhi
111. Out of the following, which is not an institution that provides civic amenities ?
- (1) Fire Brigade (2) Primary Health Centre  
(3) Consumer Disputes Redressal (4) Technical Schools
112. Find the incorrect pair :
- (1) Military Station - Cantonment Board (2) Taluka Level - Municipal Councils  
(3) District Level - Zilla Parishad (4) Big Cities - Municipal Corporations
113. Out of these pairs, which pairs indicate our participation in Local Governance ?
- (A) Citizen's Charter - Rights of Citizens  
(B) Right to Information - Effective Participation  
(C) Mass Media - Evaluation of Administration of Local Self-government Bodies  
(D) Self-help Groups - Feeling of Self-dependence
- (1) (A) and (B) (2) (A), (B) and (C)  
(3) (A), (B) and (D) (4) (A), (B), (C), (D)
114. The person contesting the election to the office of the President should be more than \_\_\_\_\_ years of age.
- (1) 21 (2) 25 (3) 30 (4) 35

115.



This is the symbol of \_\_\_\_\_, affiliated to the UN.

- (1) World Health Organisation (2) International Atomic Energy Agency  
(3) International Labour Organisation (4) Food and Agriculture Organisation

116. According to parts of Preamble of Indian Constitution, source of authority is \_\_\_\_\_.

- (1) The President (2) The Prime Minister  
(3) The Parliament (4) The People of India

117. The word 'Republic' in Preamble of Indian Constitution means \_\_\_\_\_.

- (1) No external power can dictate the Government of India.  
(2) The Government is run according to some basic fundamental rules.  
(3) The Head of State is an elected person and not a hereditary position.  
(4) All are equal before the law.

118. The Justice of International Court is chosen by \_\_\_\_\_.

- (1) General Assembly  
(2) Security Council  
(3) General Assembly and Security Council  
(4) The Secretary

119. Taking decisions on important public issues on the basis of public opinion is known as \_\_\_\_\_.

- (1) Recall (2) Initiative (3) Referendum (4) Plebiscite

120. Find the correct answer :

In modern era, direct democracy could not survive because :

- (A) Population has increased.  
(B) Territory is large.  
(C) Nature of public issues is complicated.

- (1) (A) (2) (B)  
(3) (C) (4) All of them

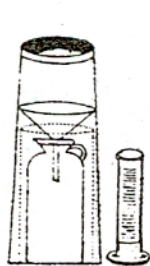
121. Farming which is entirely dependant on rainfall is called \_\_\_\_\_.

- (1) Plantation Farming (2) Dry Farming  
(3) Intensive Farming (4) Commercial Farming

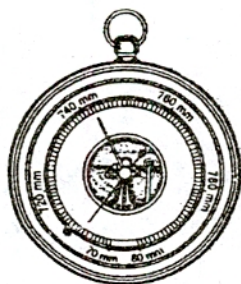
122. Name the hot water spring in Yavatmal district \_\_\_\_\_.
- (1) Vajreshwari (2) Unhavane (3) Sunapdeo (4) Kapeswar
123. Name the State Bird of Maharashtra \_\_\_\_\_.
- (1) Hariyan (Green Pig) (2) Parrot  
(3) Sparrow (4) Crow
124. A unique attraction for tourist in Goa is \_\_\_\_\_.
- (1) Ganpati Festival (2) Navratra  
(3) Carnival (4) Dipawali
125. The period of retreating monsoon in India is \_\_\_\_\_.
- (1) June to September (2) October to November  
(3) November to January (4) February to June
126. On Thursday Greenwich main latitude, the time is 12.00 p.m., then what is the time on 45° west latitude ?
- (1) Thursday 3.00 p.m. (2) Thursday 3.00 a.m.  
(3) Thursday 6.00 p.m. (4) Thursday 9.00 a.m.
127. The region between 23° 30' and 66° 30' latitude is called \_\_\_\_\_.
- (1) Temperate Zone (2) Torried Zone  
(3) Frigid Zone (4) Warm Zone
128. Wind blowing from the central high pressure to the peripheral low pressure area in a circular direction is known as \_\_\_\_\_.
- (1) Sea Breeze (2) Land Breeze (3) Anticyclone (4) Cyclone
129. The moon's orbit around the earth is \_\_\_\_\_.
- (1) Round in Shape (2) Elliptical in Shape  
(3) Vertical Direction (4) Horizontal Direction
130. Which is the strait between the land of Malaysia and the land of Indonesia ?
- (1) Palk (2) Jibralter (3) Megelon (4) Malacca

131. \_\_\_\_\_ is developed in the regions where warm and cold currents meet ?  
 (1) Thick Fog (2) Cloud (3) Hail (4) Ice
132. Providing a local or regional level article / item available at global level means \_\_\_\_\_.  
 (1) Privatisation (2) Industrialisation (3) Globalisation (4) Localisation
133. Capital of Italy is \_\_\_\_\_.  
 (1) Milan (2) Rome (3) Venice (4) Naples
134. If the contour lines on a map are close to one another, the slope is \_\_\_\_\_.  
 (1) Steep Slope (2) Uniform Slope (3) Gentle Slope (4) Concave Slope
135. Tadoba and Pench Tiger Projects are in \_\_\_\_\_.  
 (1) Western Maharashtra (2) Central Maharashtra  
 (3) Western Ghat (4) Eastern Maharashtra
136. India's second ranking state in terms of population is \_\_\_\_\_.  
 (1) Kerala (2) Maharashtra (3) Madhya Pradesh (4) Gujarat
137. A prominent geographer, who produced the set of maps :  
 (1) Vikram Sarabhai (2) Jagdishchandra Bose  
 (3) Claudius Ptolemy (4) Dr. Mashelkar
138. In terms of area, largest district in Maharashtra State is \_\_\_\_\_.  
 (1) Pune (2) Satara (3) Aurangabad (4) Ahmednagar
139. The \_\_\_\_\_ islands forming the summit of the submarine mountain range.  
 (1) Nicobars (2) Lakshadweep (3) Minicoy (4) Amindivi
140. The world's highest mountain range is \_\_\_\_\_.  
 (1) Rocky (2) Applachian (3) Himalaya (4) Andes
141. The biggest wool-producing area in India is \_\_\_\_\_.  
 (1) Kashmir (2) Rajasthan (3) U.P. (4) Gujarat
142. The Phosphate, mostly used in fertiliser industry, is found at \_\_\_\_\_.  
 (1) Lalitpur (2) Bharatpur (3) Nagpur (4) Indore

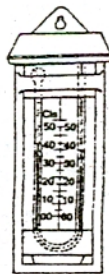
143. The highest peak in Africa is \_\_\_\_\_.
- (1) Mt. Kenya      (2) Mt. Rwenzori      (3) Mt. Meru      (4) Mt. Killimanjaro
144. EL Nino is a spanish word, the meaning is \_\_\_\_\_.
- (1) the little girl      (2) the little boy      (3) the old woman      (4) the old man
145. At Devprayag the Bhagirathi river meets the \_\_\_\_\_.
- (1) Ghagara River      (2) Koshi River  
(3) Alaknanda River      (4) Mahananda River
146. Puerto Rico Deep is found in which ocean ?
- (1) Atlantic      (2) Pacific      (3) Indian      (4) Arctic
147. Which country ranks first in wheat production in the world ?
- (1) India      (2) U.S.A.      (3) China      (4) Canada
148. The principal mineral content in Thorium is \_\_\_\_\_.
- (1) Aluminium      (2) Monozite      (3) Uranium      (4) Mica
149. In which country, the highways are known as Autoroutes ?
- (1) U. K.      (2) Germany      (3) Italy      (4) France
150. Find out the instrument and the proper number of Aneroid Barrometer :



(1)



(2)



(3)



(4)

“कच्चे काम”